

Included in the kit: Sterile breathable transport tubes with flocked-tip swabs



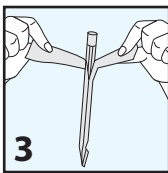
1

Refrain from eating, drinking, chewing gum, brushing teeth, or smoking for at least 30 minutes before sample collection.



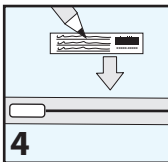
2

Wash or sanitize hands prior to handling tube or swabs to avoid contamination.



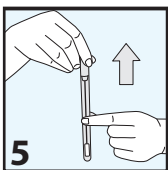
3

Remove swab collection tubes from plastic wrapper and discard wrapper.



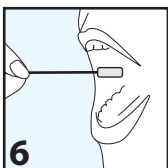
4

Write name, date of birth and date of collection on both labels. (located on the front of the box). Affix one label to each collection tube.



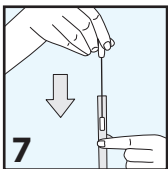
5

Carefully remove the swab from the first tube, taking caution to avoid touching the swab tip to any surface.



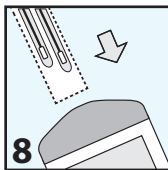
6

Using the same force as brushing your teeth, rub and rotate swab along the inside of one cheek for 30-60 seconds, ensuring that the entire swab tip has made contact with the cheek.



7

Remove swab, do not touch swab tip against teeth, lips, or other surface, and place directly into the collection tube. Make sure the top cap is tightly closed. Repeat steps 5 - 7 with the second swab on the opposite cheek.



8

Place collection tubes back into the box, enclose box into shipping envelope and ship back to Pathway Genomics.

## CONTACT INFORMATION:

Client Services

1-877-505-7374

clientservices@pathway.com

PATHWAY GENOMICS  
4755 Nexus Center Drive  
San Diego, CA 92121